

SUCCESSFUL AGEING

*Organization-wide planning to meet
needs of older persons*



IHC and IDEA (2009)

<p>Since 1959</p> <p><i>Mangere, Kingseat, Kimberley, Tokanui, Porirua, Lake Alice, Ngawhatu, Braemar, Sunnyside, Templeton, Seaview, Cherry Farm</i></p> <p>3,600 members 470 volunteers for people with disability</p>	<p>In large and small communities</p> <p>Kaikohe Invercargill</p>	<p>6,400 staff</p> <p>5,900 employed in IDEA Services</p>	<p>Supporting 5,800 people through IDEA Services</p> <p>3,800 in range of Living Services (group homes, supported living, contract board, foster family care)</p>
--	---	---	---

International trends

People living longer, including those with disabilities

Some groups have earlier age-related deterioration

Poor health status compounding reduced quality of life

Philosophy and policy silo's and clashes affecting planning and practice

Families and people with disabilities very uncertain of future paths

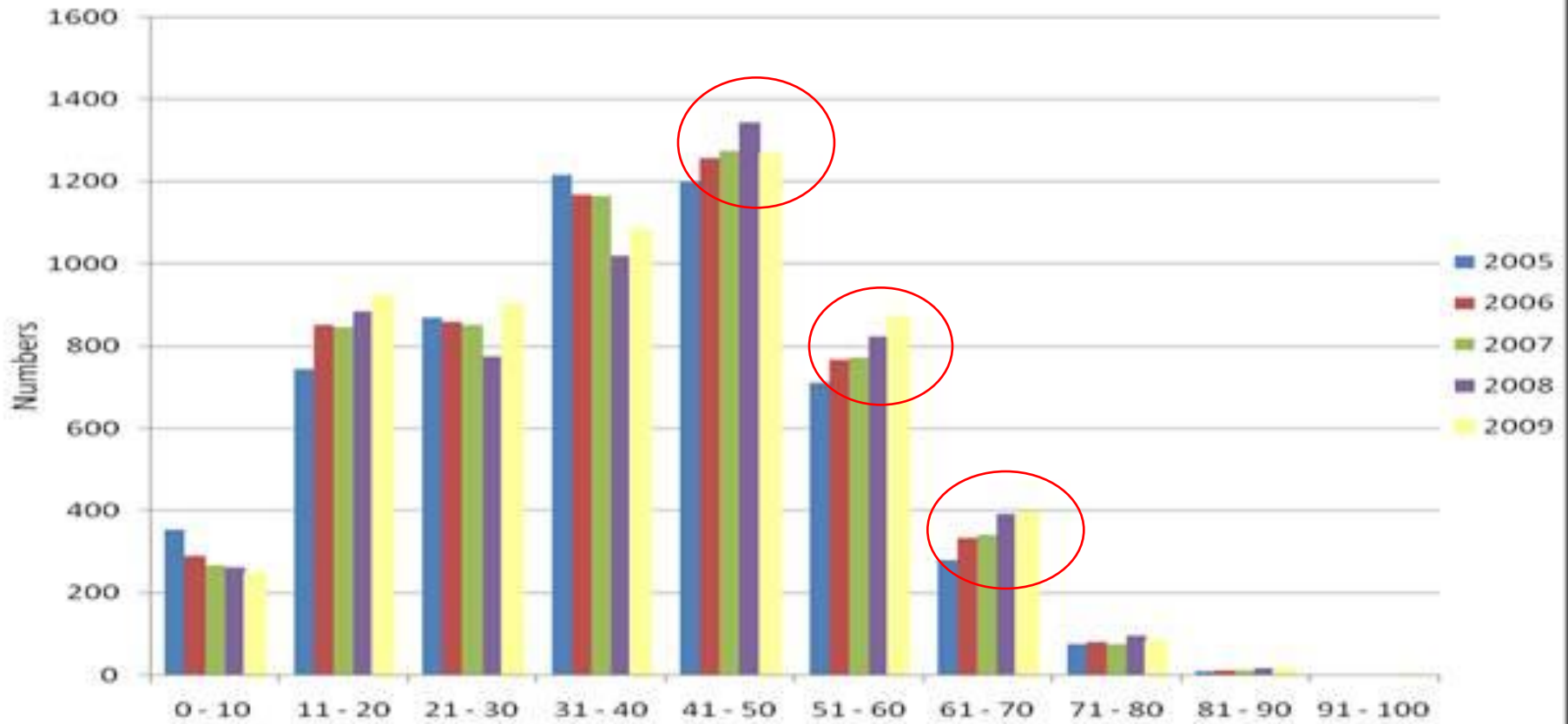
Survey of Organisational Readiness 2009

- On-line survey of senior managers
- Site visits - 13 residential and vocational facilities
- 30 staff interviewed
- Family forums
- Consumer forums
- Review of policies, documents and publications
- Client database analysis

Ages profile of IDEA Service users - by decade

Age	0 - 30	31 - 40	41 - 50	51 - 60	61 - 70	71 - 80	81 - 90	TOTAL
# of service users	2144	1,036	1,274	875	401	94	13	5,837

Service User Age Profile 2005-2009



Cumulative Age Distribution of People with Down Syndrome

By Disability Type	31+	41+	51+	61+	71+
Numbers of people with Down Syndrome	569	423	179	42	2
% of people with Down Syndrome	65.5	48.7	20.6	4.8	0.2

What we learned

- Complex interplay of expectations, resources - integrated response
- Strong desire to collaborate
- Pressure already from
- Limited responses from day services
- Home based support
- NASC reassessment – fears
- Access to specialist support
- Substantial transport demands

13 Common Issues

Awareness of
Life stages

Diversity

Family/social
connections

Meaningful
activity

Housing

End of
Life/Death

Service users
awareness
and education

Health issues

Workforce
issues

Planning for
the future

Ageing in
place policy
gap

Funding
mechanisms

Mobility and
transport

Successful Ageing Project 2010-2014

- ✓ Integration across the organisation
- ✓ Time imperative
- ✓ Sustainable development
- ✓ Better articulation of Ageing in Place

Project Phases

1. Exploration

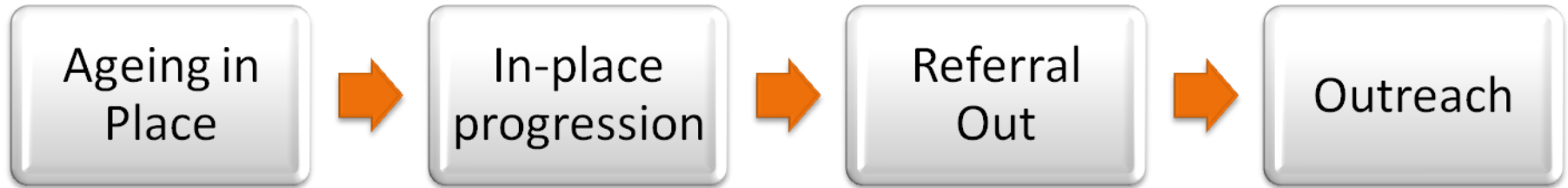
- Broadening networks
- Addressing key policy gaps
- Preparing for exemplars

2. Strengthening Practice

- Policy implementation
- Using exemplars to expand our knowledge

3. Organisation-wide implementation and evaluation

Models of Service Delivery



Have a direct influence on

PROPERTIES

- Location
- Size
- Universal design

BUSINESS

RELATIONSHIPS

- Contractual
- Partnerships
- New colleagues & alliances

CONSUMERS

- Who is the consumer?
- Supported decision-making
- Managing expectations
- Person-centred planning
- Maintenance of social connections

FUNDING

- Flexibility
- Individualised
- Congruence with other sectors

STAFF

- Numbers
- Skill set
- Supervision

TRANSPORT

- Public/private
- Adapted vehicles
- Scooters

COMPLIANCE/ AUDIT

- Multiple standards
- Consumer feedback

Research as a Guide?

- Quality of life comparisons across residential models
- Indicators of placement change (loss of vocational, health, awake night support)
- Dementia course and projections
- Families' experience of transition planning
- Service users' perspectives on ageing
- High value of family/social connection as people age

5-a-day: Steps to Happiness



- Connect
- Be active
- Be curious
- Learn
- Give

So let's talk



- What roles does the disability sector have in meeting the needs of people as they age?
- What are the opportunities and barriers we should be aware of?
- What are your responses to those opportunities and barriers?

Just one action from today



- Connect
- Be active
- Be curious
- Learn
- Give

