

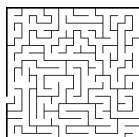


Moden, Brooks, Darkin

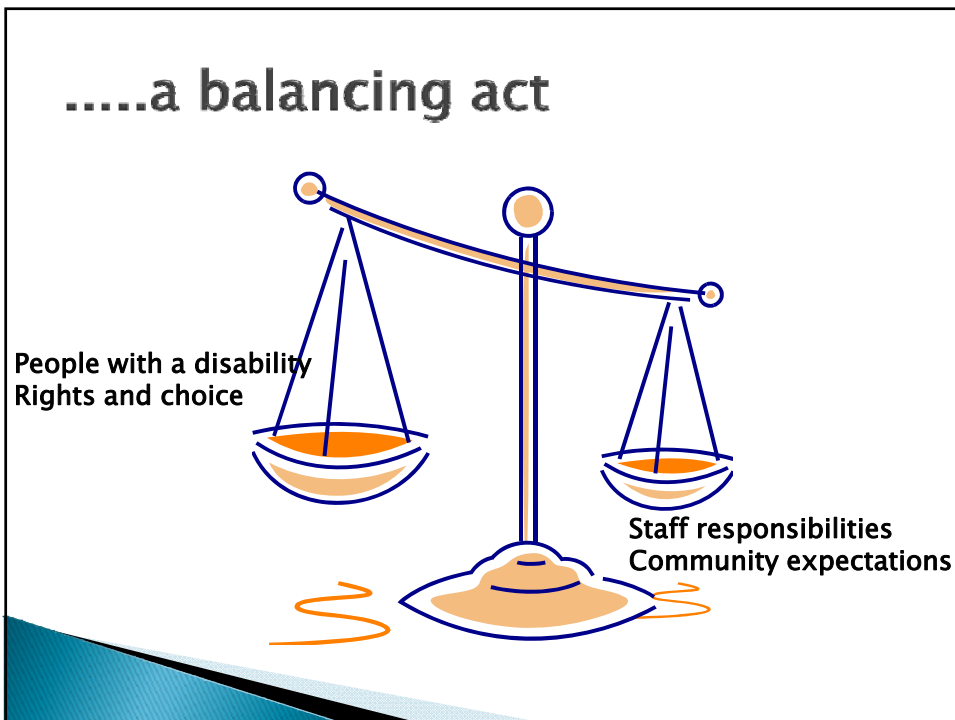
**THE DSW'S ROLE IN THE RIGHTS,
CHOICE & RESPONSIBILITIES
MAZE. A SUCCESSFUL
APPROACH ON THE GROUND**

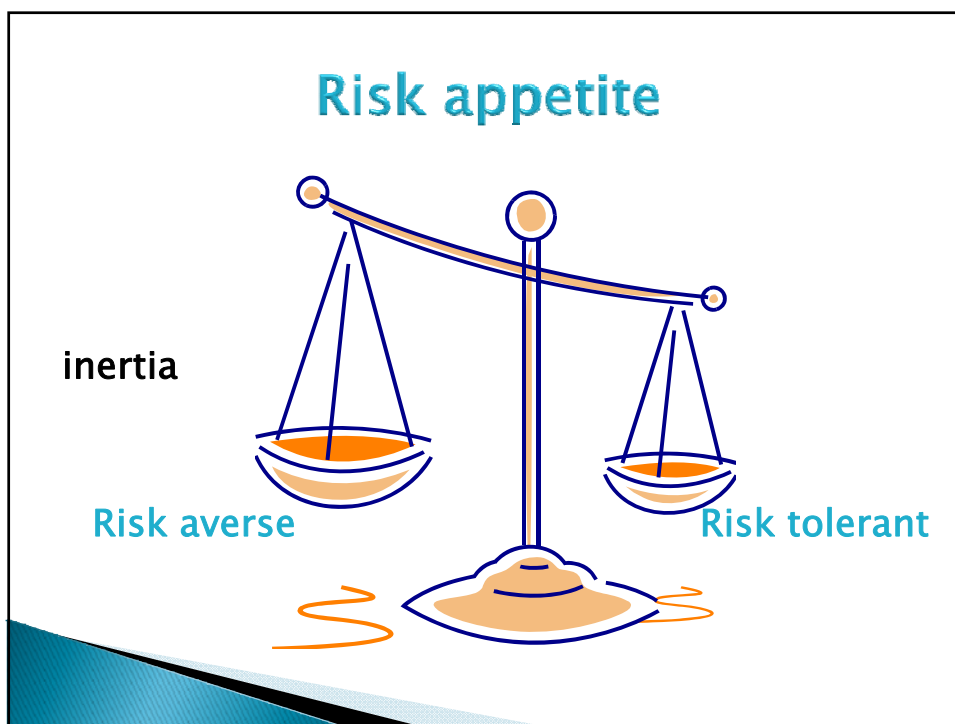
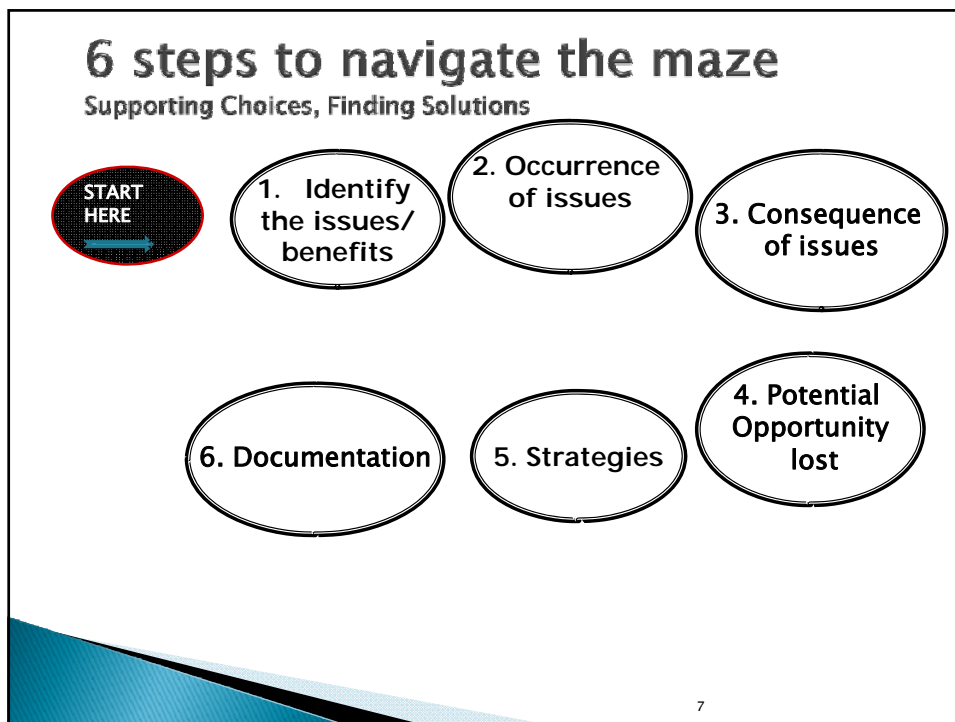
**The Disability Support
Workers' role in the rights,
choice & responsibilities
maze**

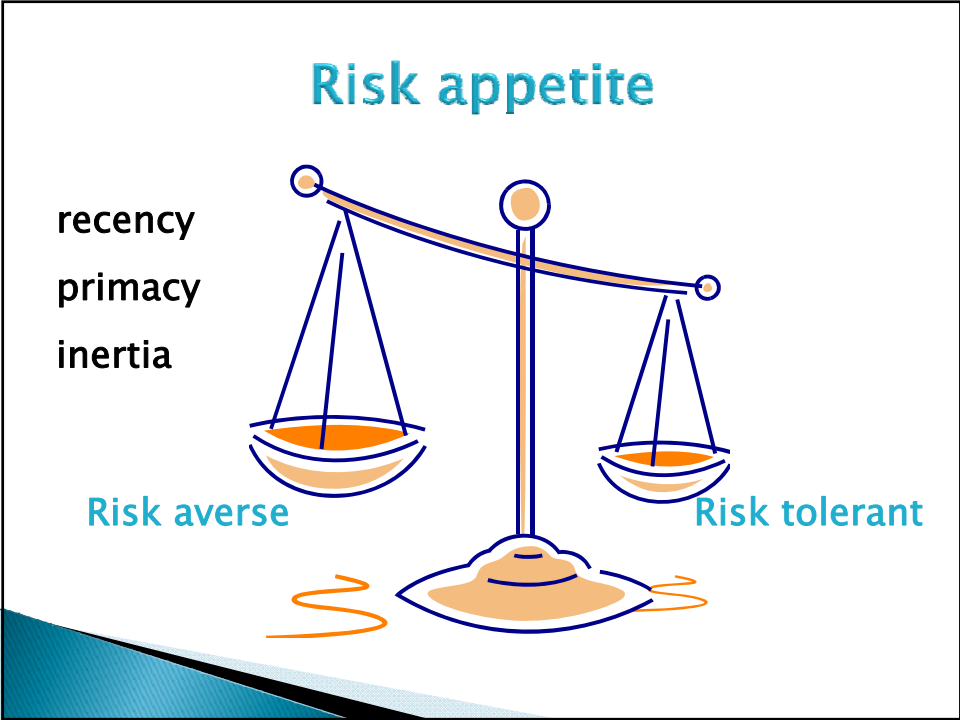
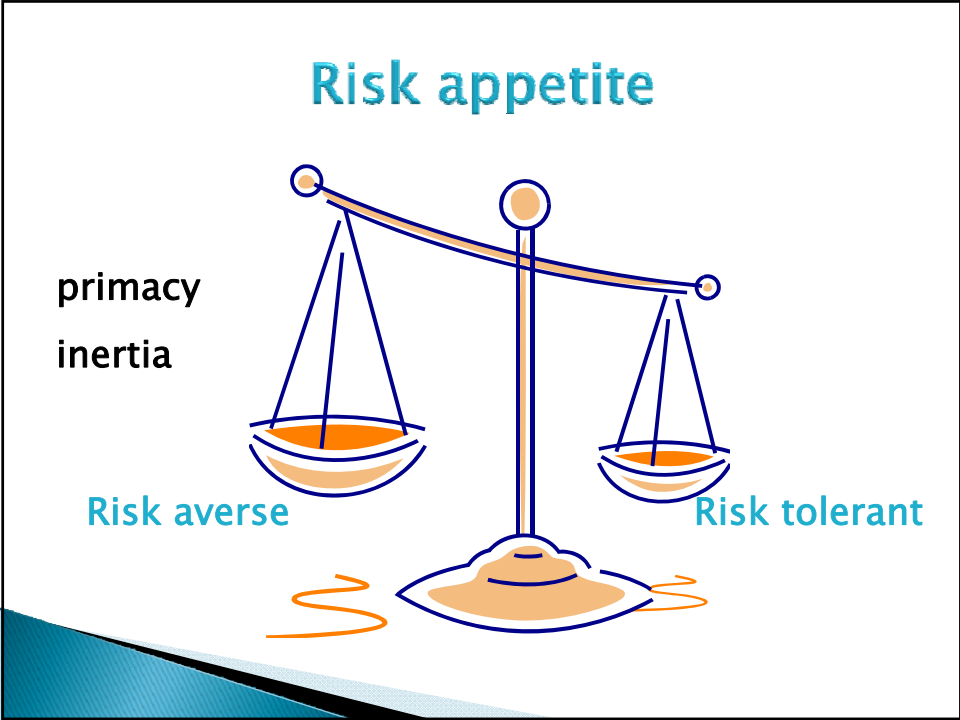
**10TH ANNUAL ASID RESEARCH TO PRACTICE
DSW CONFERENCE**

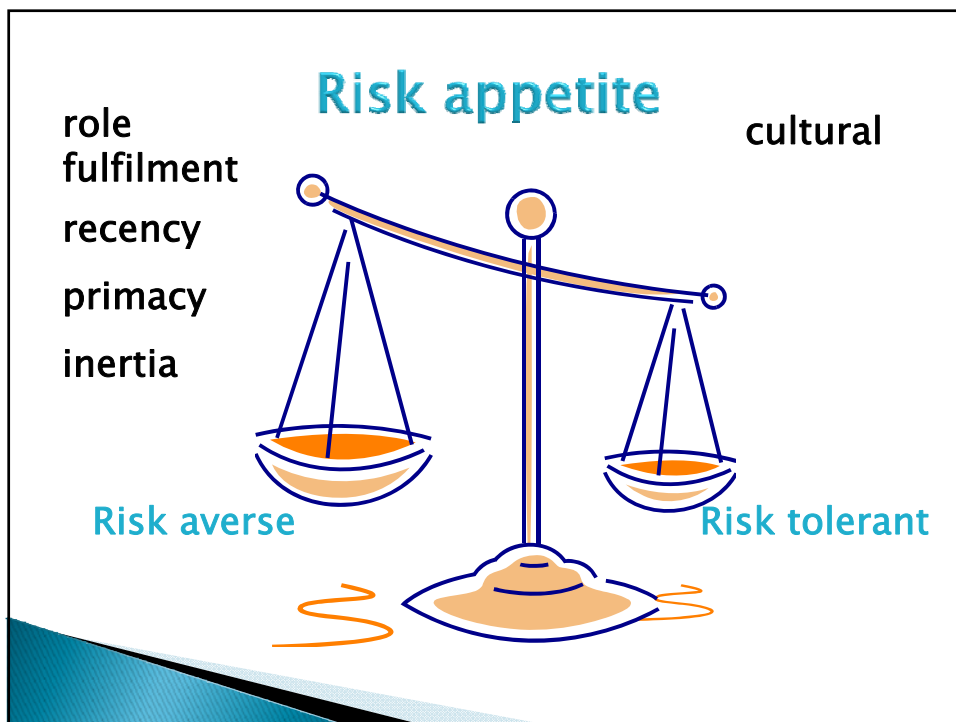
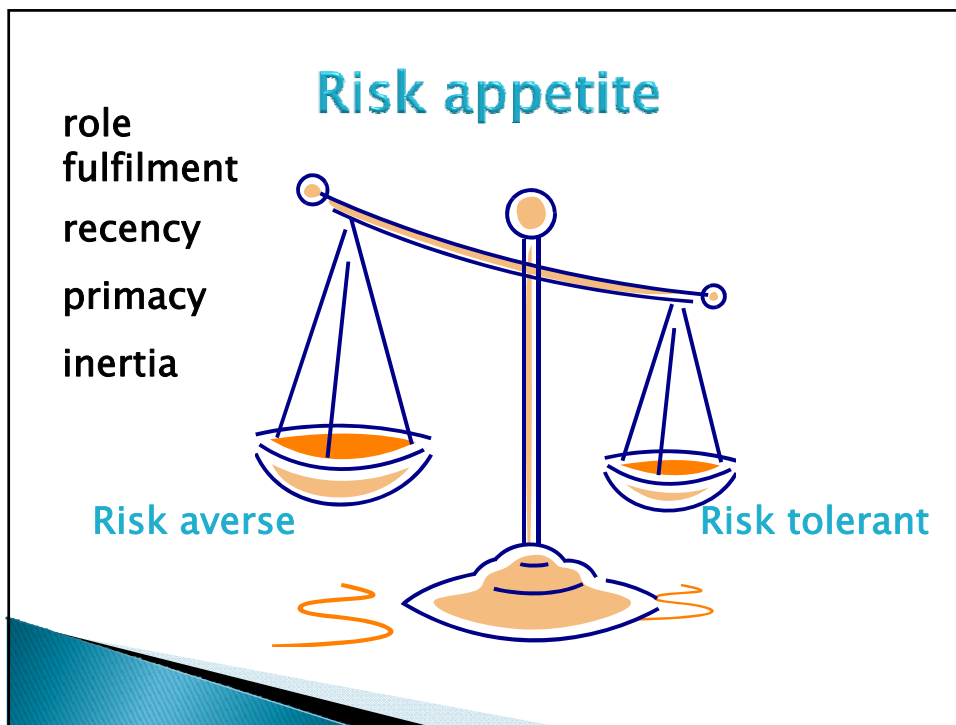


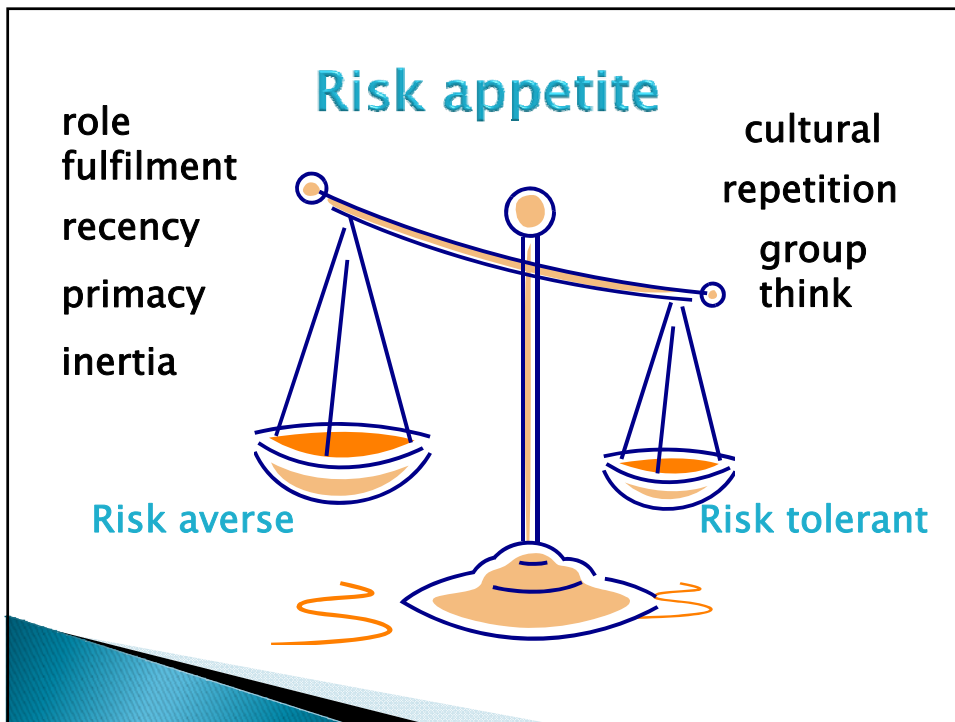
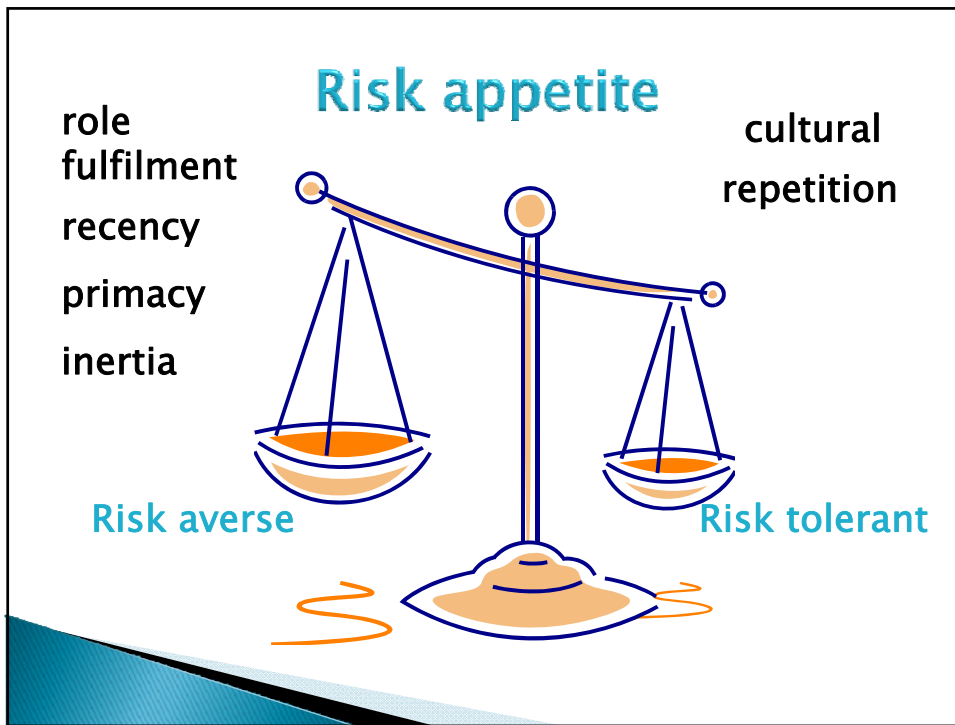
BROOKS, DARKIN AND MODEN

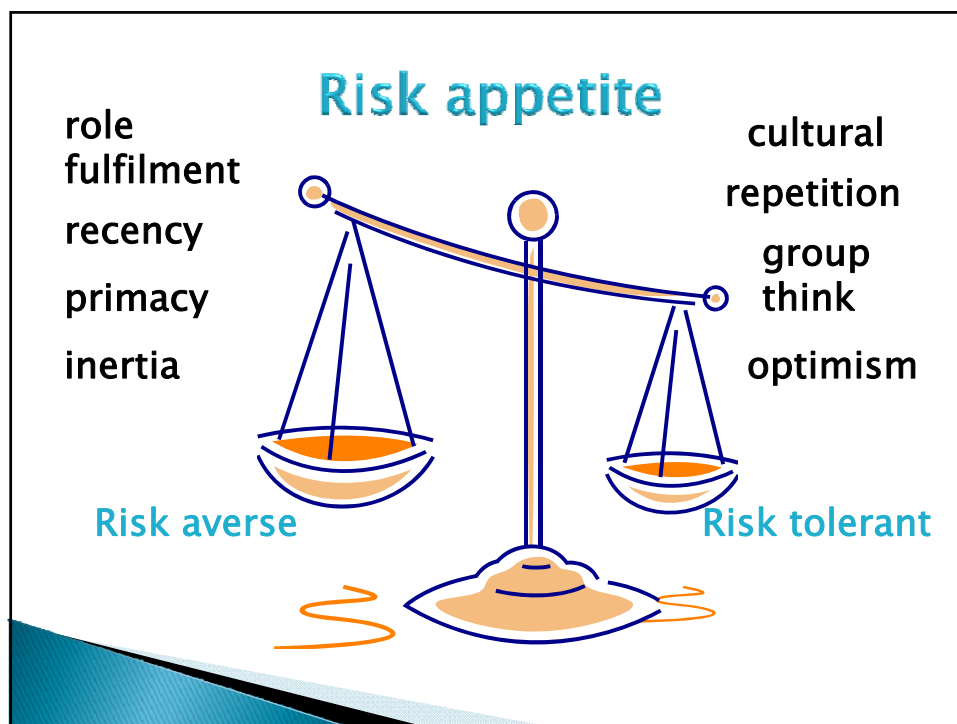












Disability Support Workers' Toolkit

- ▶ Supporting Decisions Finding Solutions Tool
- ▶ Innovative strategies
- ▶ Professional judgement
- ▶ Your experience, knowledge
- ▶ Supportive decision making
- ▶ Recognising your own values and preferences
- ▶ Team work



More information

- ▶ Catherine Darkin PH. (03) 5561 9436

Catherine.Darkin@dhs.vic.gov.au

- ▶ DVD - 'Bungy jumping, Lawyers & Love
- ▶ DVD - 'Supporting Choices, Finding Solutions'
- Rights, choice and responsibilities'

.....available early 2011